



Yewfield Road, London, NW10 9TD

Offers In The Region Of £474,950 Freehold



**KEY FEATURES:**

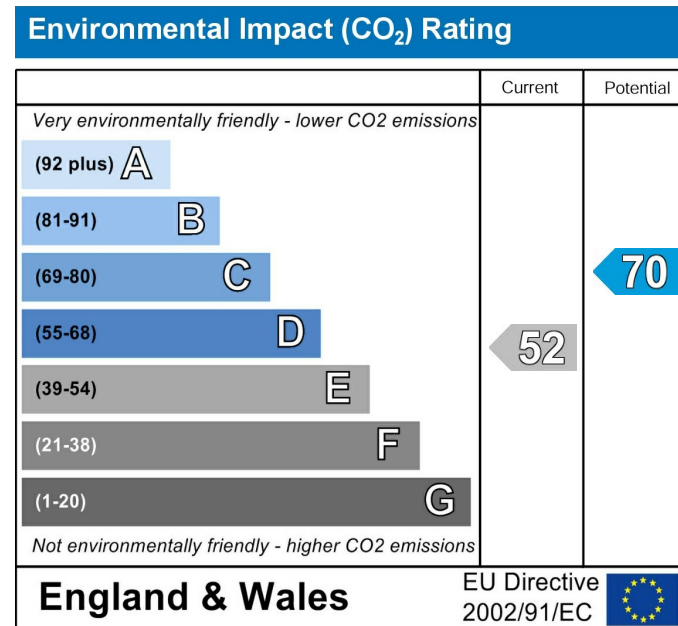
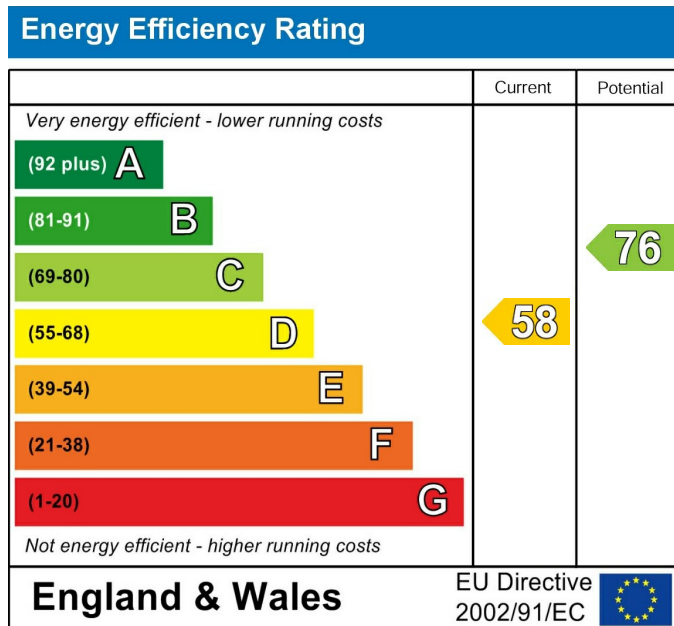
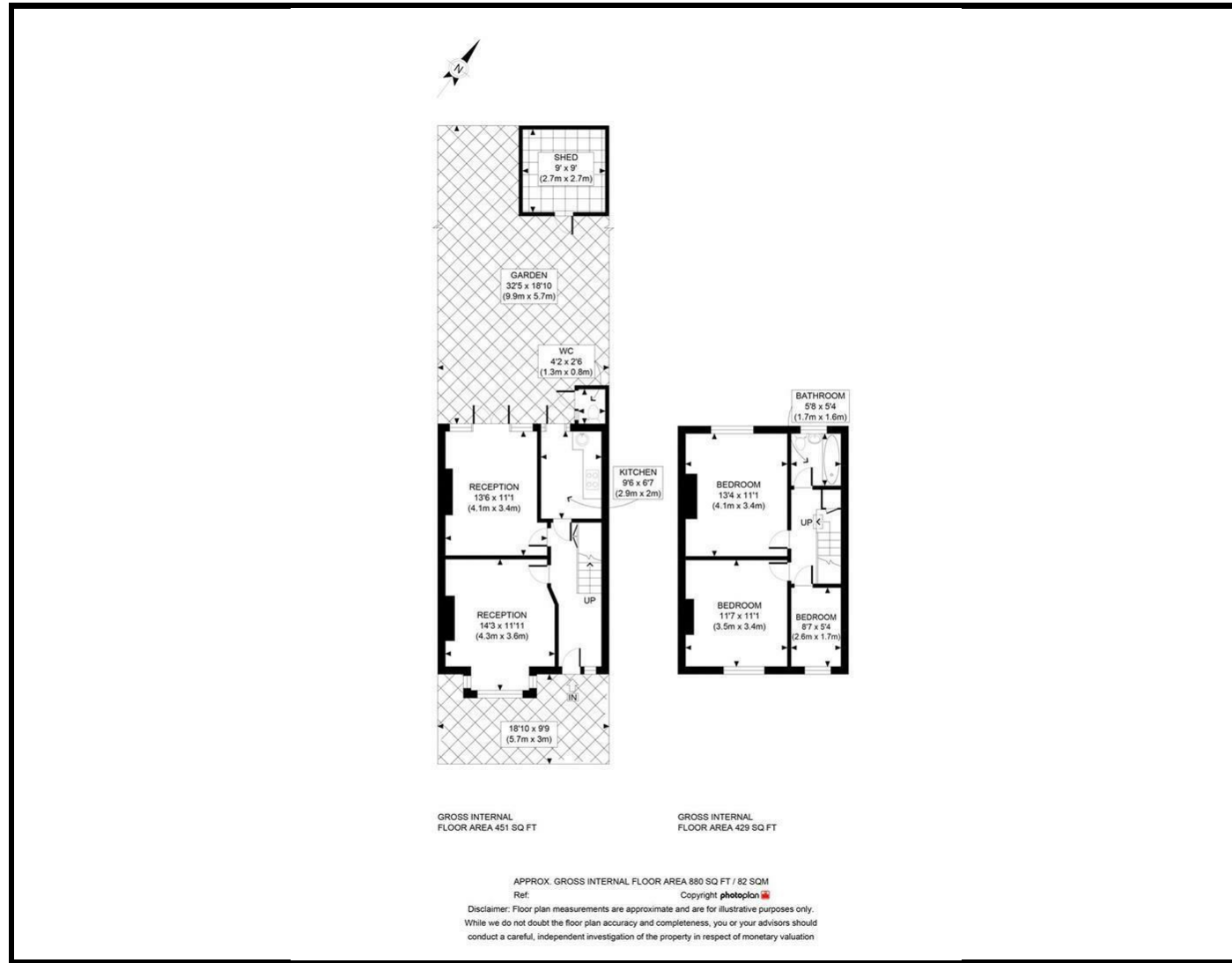
- Three bed Mid terraced house
- Priced for early sale
- Two receptions
- Freehold
- All serious offers invited
- No Chain
- ideal investment
- Gardens
- Close to Roundwood Park
- Over 900 sq ft

A SPACIOUS THREE BEDROOM terraced home in a popular road with GARDENS TO FRONT AND REAR.

This SUPERB PROPERTY is an ideal buy to let investment and all serious offers for the freehold interest are invited.

Offered with no onward chain early viewing is considered essential!

The floor area is approximately 880 sq.ft (182 sq.m)



Whilst every effort is made to give a fair description, the accuracy of these particulars is not guaranteed, neither do they constitute an offer or contract.

**CHURCHILL ESTATE AGENTS** have not tested any apparatus, equipment, fitting or services and so cannot verify that they are in working order. The buyer is advised to obtain verification from their solicitor or surveyor. Measurements are correct to within +/- 6 A sonic tape is used. None of the statements contained in these particulars or any of our properties are to be relied upon as a representation of fact.